

Low latitude ionospheric scintillation climatology around the equatorial anomaly crest over Kenya and its contribution to errors in GPS.

Olwendo.O.J *¹, P. Baki², P. J. Cilliers³, P. Doherty⁴

¹Pwani University College, School of Pure and Applied Sciences, Department of Mathematics and Physics, P.O Box 195-80108, Kilifi, Kenya. castrajoseph@yahoo.com , +254-701965569, fax: +254-417522128.

²Kenya Polytechnic University College, School of Pure and Applied Sciences, Department of Physics, P.O Box 52428-00200, City Square Nairobi. Paul.baki@gmail, +254 343672, fax: +254-2219689.

³South African National Space Agency, Space Science Directorate, P.O Box 32, Hermanus, South Africa. pjcilliers@sansa.or.za, +27 283121196, fax: +27283122039.

⁴Institute for Scientific Research, Boston College, 201 Foster Street, Brighton, MA-02135, USA. Patricia.doherty@bc.edu, +1-6175528774 fax: +1-6175528842.

ABSTRACT

In this study we have used a VHF and GPS-SCINDA receiver located at Nairobi (36.8°E, 1.3°S, dip -24.1°) in Kenya to investigate the climatology of ionospheric L-band scintillation occurrences for the period 2009 to 2012; and seasonal variation of the zonal plasma drift irregularities derived from a VHF receiver for the period 2011. The annual and diurnal variations of L-band scintillation indicate occurrence at post sunset hours and peaks in the equinoctial months. However VHF scintillation occurs at all seasons around the year and is characterized by longer duration of activity and a slow fading that continues till early morning hours unlike in the L-band where they cease after midnight hours. A directional analysis has shown that the spatial distribution of scintillation events is mainly on the Southern and Western part of the sky over Nairobi station closer to the edges of the crest of the Equatorial Ionization Anomaly. The distribution of zonal drift velocities of the VHF related scintillation structures indicates that they move at velocities in the range of 20 to 160 m/s and their dimension in the East-West direction is in the range of 100 to 900 km. The December solstice is associated with the largest plasma bubbles in the range of 600 to 900 km. The contribution of scintillation events to positioning errors is evident during intense scintillation; an issue which remains a great challenge to precise positioning applications of GPS particularly during nominal times.

The most significant observation from this study is the occurrence of post- midnight scintillation without pre-midnight scintillations during magnetically quiet periods. The mechanism leading to the formation of the plasma density irregularity causing scintillation is believed to be via the Rayleigh Tailor Instability; it is however not clear whether we can also attribute the post-midnight plasma bubbles during magnetic quiet times to the same mechanism. From our observations in this study, we suggest that a more likely cause of the east ward zonal electric fields at post-midnight hours is the coupling of the ionosphere with the lower atmosphere during nighttime. This however needs a further investigation based on relevant data.

Key words: Ionospheric scintillation, zonal drifts velocity, GPS-SCINDA, VHF receiver.

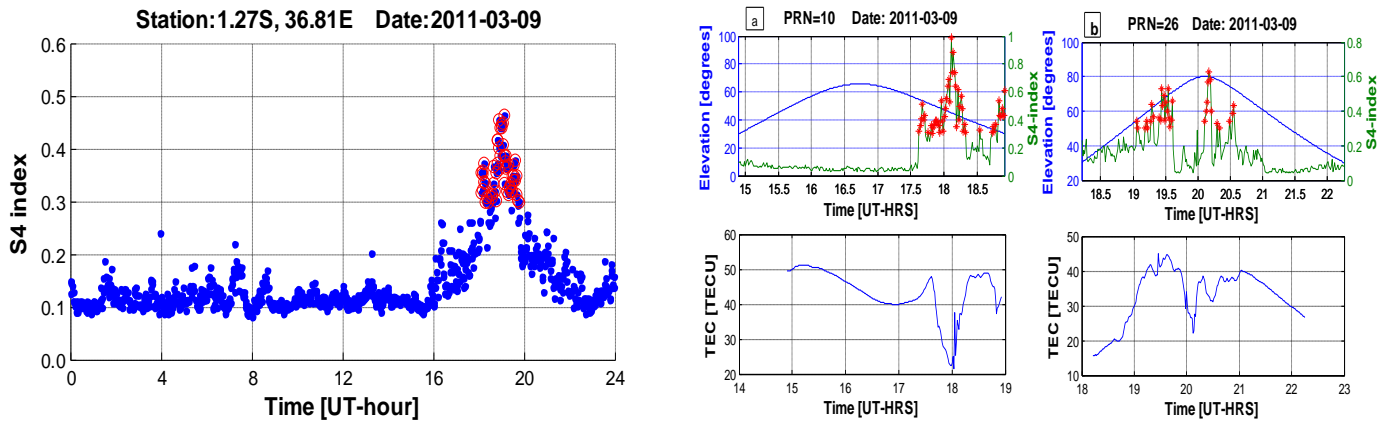


Figure 1: Diurnal variation of scintillation events on 9th March 2011 and the individual PR showing scintillation during the events alongside their total electron contents.

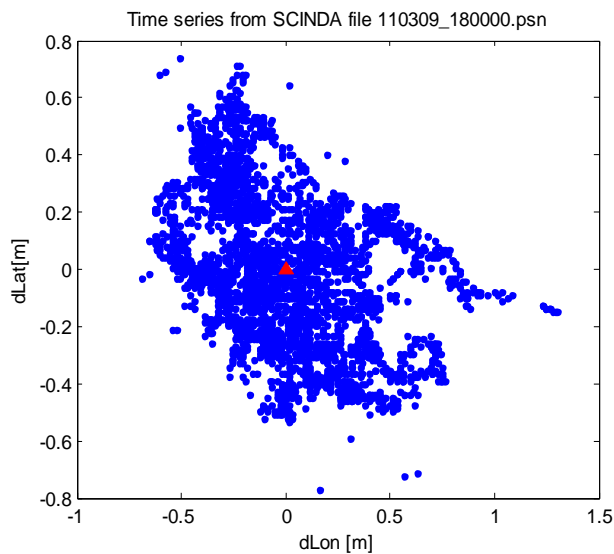


Figure 2: Positioning errors along the latitudes and longitudes at 18:00 during intense scintillation events that is depicted in Figure 1.

References

- Aarons, J., M. Mendillo, R. Yamtosca, GPS phase fluctuations in the equatorial region during sunspot minimum. *Radio Sci.*, 32, 1525-1550, 1997.
- A DasGupta, A Paul and A Das, Ionospheric total electron content (TEC) studies with GPS in the equatorial region, *Indian Journal of Radio and Space Physics*, vol. 36, 278-292, 2007.
- Abadi, P., S. Saito, and W. Srigutomo, Low latitude scintillation occurrence around the equatorial anomaly crest over Indonesia, *Ann. Geophys.*, 32, 7-17, 2014

- Abdu, M. A., E. Alam Kherani, I. S. Batista, E. R. de Paula, D. C. Fritts and J. H. A. Sobral, Gravity wave initiation of equatorial spread F/Plasma bubble irregularities based on observational data from the SpreadFEX campaign. *Ann. Geophys.*, 27, 2607-2622, 2009.
- Groves, K. M., S. Basu, E. J. Weber, M. Smitham, H. Kuenzler, C. E. Valladares, R. Sheehan, E. Mackenzie, J. A. Secan, P. Ning, W. J. McNeill, D. W. Moonan and M. J. Kendra, Equatorial Scintillation and system support, *Radio Sci.*, 32, 2047-2064, 1997.
- Otsuka, Y., K. Shiokawa, and T. Ogawa, Equatorial Ionospheric scintillations and zonal irregularity drifts observed with a closely spaced GPS receivers in Indonesia, *Journal of the Meteorological Society of Japan*, 84A, 343-351, 2006
- Paznukhov, V. V., Carrano, C. S., Doherty, P. H., Groves, K. M., Caton, R. G., Valladares, C. E., Seemala, G. K., Bridgwood, C. T., Adeniyi, J., Amaeshi, L. L. N., Damtie, B., D'ujanga, F. M., Ndeda, J. O. H., Baki, P., Obrou, O. K., Okere, B., Tsidu, G. M., Equatorial plasma bubbles and L-band scintillation in Africa during solar minimum. *Ann. Geophys.* 30, 675-682, 2012
- Yizengaw, E., J. Retterer, E. E. Pacheco, P. Roddy, K. Groves, R. Caton, and P. Baki, Post-midnight bubbles and scintillation in the quiet-time June solstice, *Geophys. Res., Lett.* 40, 5592-5597, 2013.

Acknowledgement

We appreciate the Air Force Research Laboratory collaboration and Boston College for the donation and installation of the GPS-SCINDA receiver and the installation of the VHF receiver at the University of Nairobi (Kenya). We are very grateful to the reviewers in their assistance to evaluate this work.